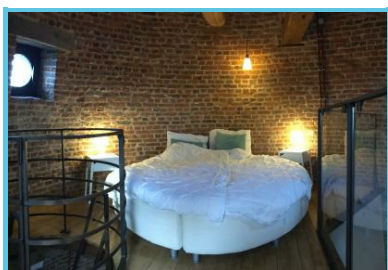




Document dated from 05/03/2021

The Le Moulin du Ya gîte in La Louvière, for 2 to 4 persons



Frédérique Célant

Rue De Bignault 30
Houdeng-aimerles - 7110

Phone number (main contact): +32 64 66 28 17
Telephone de reservation: +32 479 23 47 03

<http://www.lemoulinduya.be>

Le Moulin du Ya is quite an original gîte, set in a 19th century windmill. It has been awarded 3 épis.

Lodgings on 3 levels

Le Moulin du Ya is divided in 3 levels. From the ground floor, you can all the way to the top of the building but each part keeps some intimacy. The owners proved quite creative when it came to turn this windmill in a loft.

Ground floor: living space. Lounge with a chimney, a TV, equipped kitchen, living room, toilets, etc...

First floor: bedroom, bathroom (shower, sink)

Second floor (last floor): parental suite

Outside the windmill and services offered

Outside is a beautiful garden with a terrace and games for the children.

Free WIFI in the gîte.

Sauna by the gîte.

Parking on site.

Activities around the Moulin du Ya

The owners are happy to lend you a tandem, for you to explore the region and why not, try the RAVel nearby.

You could visit the Canal du Centre Historique and its hydraulic lifts (listed by UNESCO), the boat lifts of Strepv-Thieu, the mining site of Bois-du-Luc, La Louvière, Binche or the town of Mons.

The Carnival of Binche are known around the world and the festivities of La Louvière also are worth stopping for.

The information contained herein is provided as a guide only.

We recommend that you check with the local supplier before you leave.

Website editor

Michel VANKEERBERGHEN, Wallonia Belgium Tourism Chief Executive Officer (WBT asbl).

© Wallonia Belgium Tourism (WBT asbl). Avenue Comte de Smet de Nayer 14 . 5000 Namur. Belgium + 32 (0)81 84 41 00 walloniabelgiumtourism.co.uk info@wbtourisme.be

The information contained in this document is provided and has been compiled very carefully by Wallonia Belgium Tourism (WBT NPO). The editor cannot be held responsible for possible changes that could have occurred between the collection of data and their presence in this document.

Unless otherwise specified, the information you find in this document belongs to Wallonia Belgium Tourism (WBT NPO).

Any use or reproduction of the information require a prior written permission

Wallonia Belgium Tourism (WBT NPO) reserves all intellectual property rights in this document