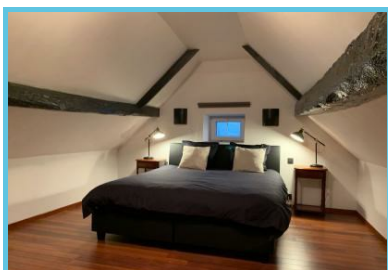




La Belle Etable: a guesthouse in Falmignoul



La Belle Etable

Rue Haute 23

Dinant - 5500

Phone number (main contact): +32
473 58 80 58

Telephone de reservation: +32 473

58 80 58

<http://www.belle-etable.be/>

This 18th-century farm in the village of Falmignoul, near Dinant, was beautifully turned into a guesthouse. It is listed as one of the most beautiful farms in Wallonia.

Description

The two spacious rooms have been decorated with love, the details highlighting the stone vaults. Each enjoys:

- a view on the yard and garden
- a reading area
- a bathroom with an Italian shower
- toilets

- Free WIFI
- Access to a wellness pace with a jacuzzi, sauna, massage table and multijet shower

Breakfast is included.

The owners also have 2 gîtes (one for 4 persons, the other for 4 to 8 guests) on the same site.

Discover Dinant and his region

Here are a few ideas to explore the area:

- [The Cave of Dinant and La Merveilleuse](#)
- [The Château de Freÿr](#)
- [The Furfooz park - walks along the Lesse river](#)
- [The citadel of Dinant](#)

The information contained herein is provided as a guide only.

We recommend that you check with the local supplier before you leave.

Website editor

Michel VANKEERBERGHEN, Wallonia Belgium Tourism Chief Executive Officer (WBT asbl).

© Wallonia Belgium Tourism (WBT asbl). Avenue Comte de Smet de Nayer 14 . 5000
Namur. Belgium + 32 (0)81 84 41 00 walloniabelgiumtourism.co.uk info@wbtourisme.be

The information contained in this document is provided and has been compiled very carefully by Wallonia Belgium Tourism (WBT NPO). The editor cannot be held responsible for possible changes that could have occurred between the collection of data and their presence in this document.

Unless otherwise specified, the information you find in this document belongs to Wallonia Belgium Tourism (WBT NPO).

Any use or reproduction of the information require a prior written permission

Wallonia Belgium Tourism (WBT NPO) reserves all intellectual property rights in this document